

# SECOND LESSON



BY EVOLUTION ENG

# Possesive

## PRONOUNS

Possessive adjectives in English are those that help us to express who owns something or to whom this or that belongs. In English they are used much more than in Spanish.

- These are my books.
- I have my hair cut this morning.

In both sentences we use the first person possessive, "mi", but in the second sentence we refer to somewhat redundant information. In English it is very typical to use possessive adjectives with body parts and other personal objects

# Possessive adjectives

ARE AS FOLLOWS:

- My – mi / mis
- Your – tu/tus
- Her – his/ her (hers)
- His – his/its (of him)
- Its – its/their (of it)
- Our – our
- Their – su/sus (theirs)

# Some sentences with

EACH OF THE POSSESSIVE ADJECTIVES:

**My:** **My** son is 6 years old

**Your:** I'm **your** father

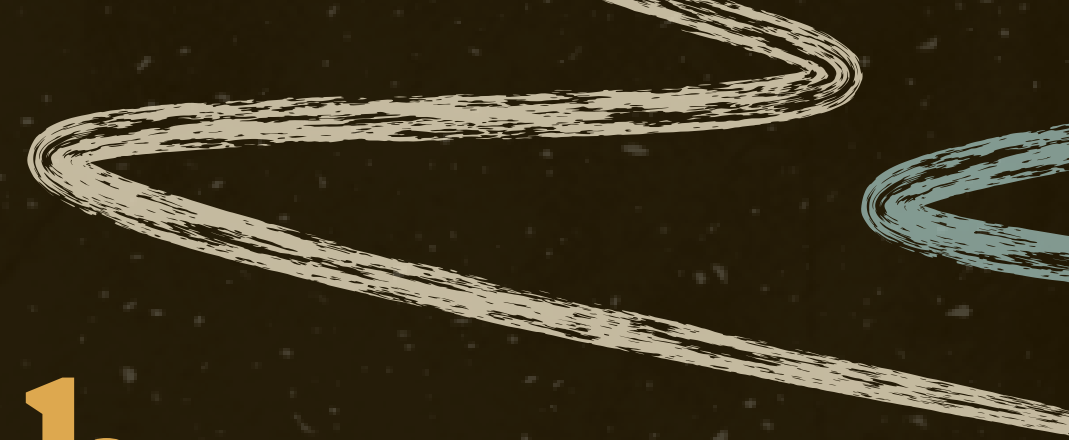
**His:** Barcelona is **his** hometown

**Her:** **Her** dress is blue - Su vestido es azul

**Its:** My cat doesn't like to sleep in **its** cage

**Our:** This is **our** house

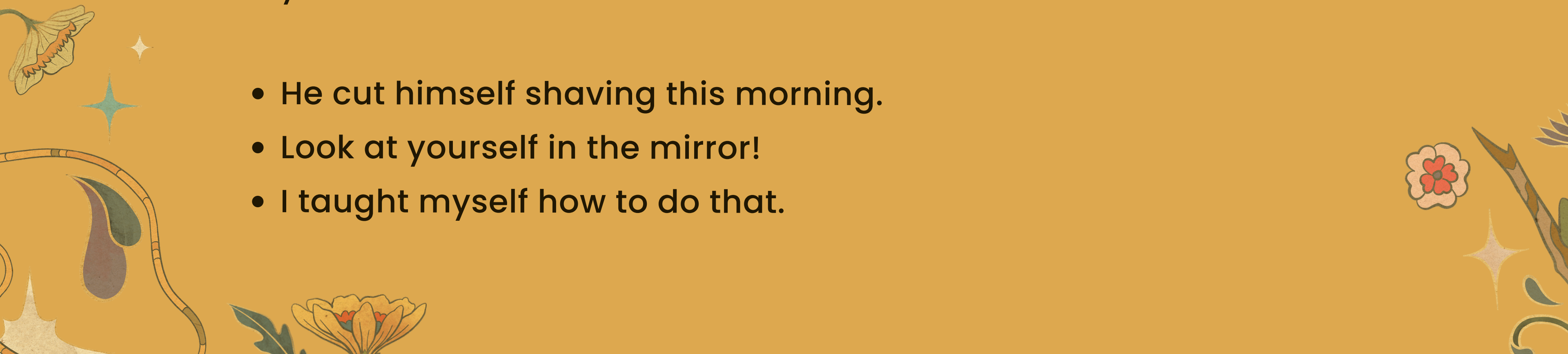
**Their:** Do you know if **their** children go to school?





# Reflexive pronouns

Reflexive pronouns are pronouns that are used when the same person is the subject and object of the action or to emphasize that the subject has personally performed the action. These are some examples of how they are used:

- He cut himself shaving this morning.
  - Look at yourself in the mirror!
  - I taught myself how to do that.
- 

# Apostrophe of possession

It is an element commonly used in oral and written communication to indicate possession. It is used with names of people, groups, countries and animals. They express a relationship of belonging between two elements.

The apostrophe s is used to indicate possession in English. For example, if you want to indicate that something belongs to a person, you would use the apostrophe s. For example, "John's car" means that the car belongs to John. It is also used to form a contraction. For example, "it's" means "it is".



# VIDEO LINKS:

## **POSSESSIVES PRONOUNS**

<https://www.youtube.com/watch?v=XRaiyf7c6e0>

[https://www.youtube.com/watch?v=v9jYTZNI\\_bA](https://www.youtube.com/watch?v=v9jYTZNI_bA)

## **REFLEXIVE PRONOUNS**

<https://www.youtube.com/watch?v=wNWrGAzwmK8>

<https://www.youtube.com/watch?v=c2jdi2JEgGM>

## **APOSTROPHE OF POSSESSION**

<https://www.youtube.com/watch?v=My6oGvkHnfY>



**Thank you!**